

G

GLASGOW

LE CITTA'
E LA SFIDA
DELLA NEUTRALITA' CLIMATICA

Dr. Paola Pasino
paola.pasino@glasgow.gov.uk

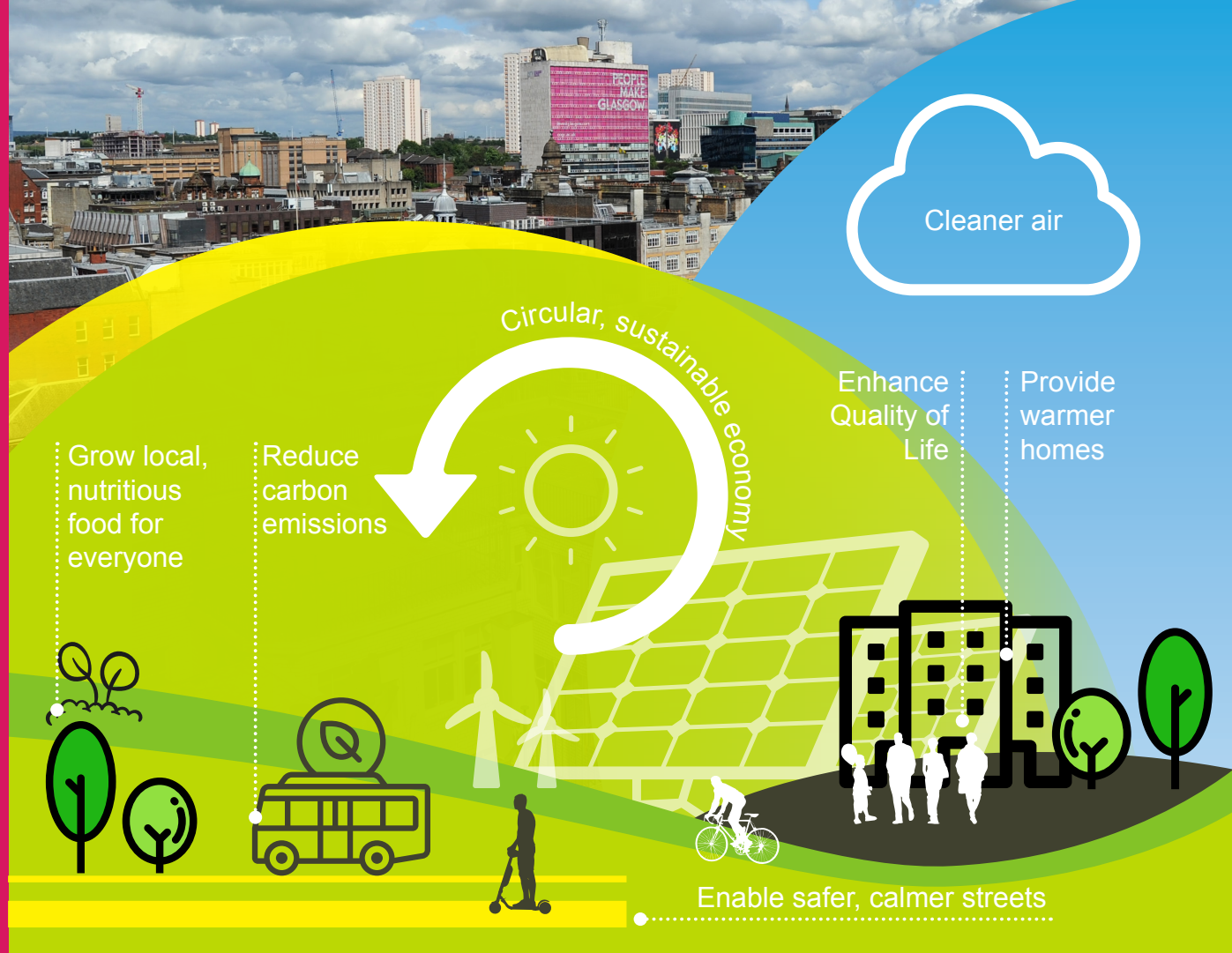




LOW CARBON CITY

Climate Change is not an **isolated** challenge, and we must ensure a **just transition** to a **Low Carbon, Climate Resilient City**

Glasgow has pledged to achieve **Carbon Neutrality by 2030**



Circular, sustainable economy

Cleaner air

Grow local, nutritious food for everyone

Reduce carbon emissions

Enhance Quality of Life

Provide warmer homes

Enable safer, calmer streets



LOW CARBON CITY

COP26 host city, Glasgow, has built a reputation as a smart, sustainable city of the future.

New investment over the next decade in **low-carbon** and **renewable energies**



175,000

Charging points

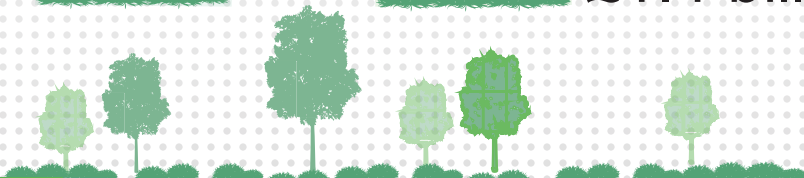
£298 million



244,000

Electric Heat Pumps

£1.4 billion





LOW CARBON CITY

Climate Emergency Implementation Plan (2020)

Sustainable Glasgow Hubs:

- Greening the City
- Transport Hub
- Heating & Housing Hub
- Green Economy Hub



G

LOW CARBON CITY

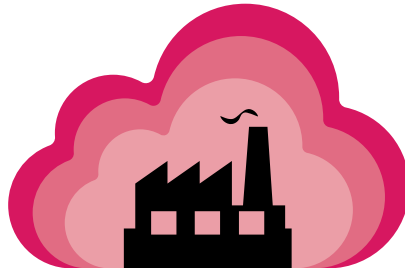
- Actions to address the climate crisis must not further disadvantage people and communities who already experience significant inequalities.
- Actions to create a safer and more sustainable city should also be aimed at building a just and more equal city.



Transport Sector



Domestic Sector



Industry and Commercial Sector



M8 - scar in the city centre



70,000 pre-1919 tenements



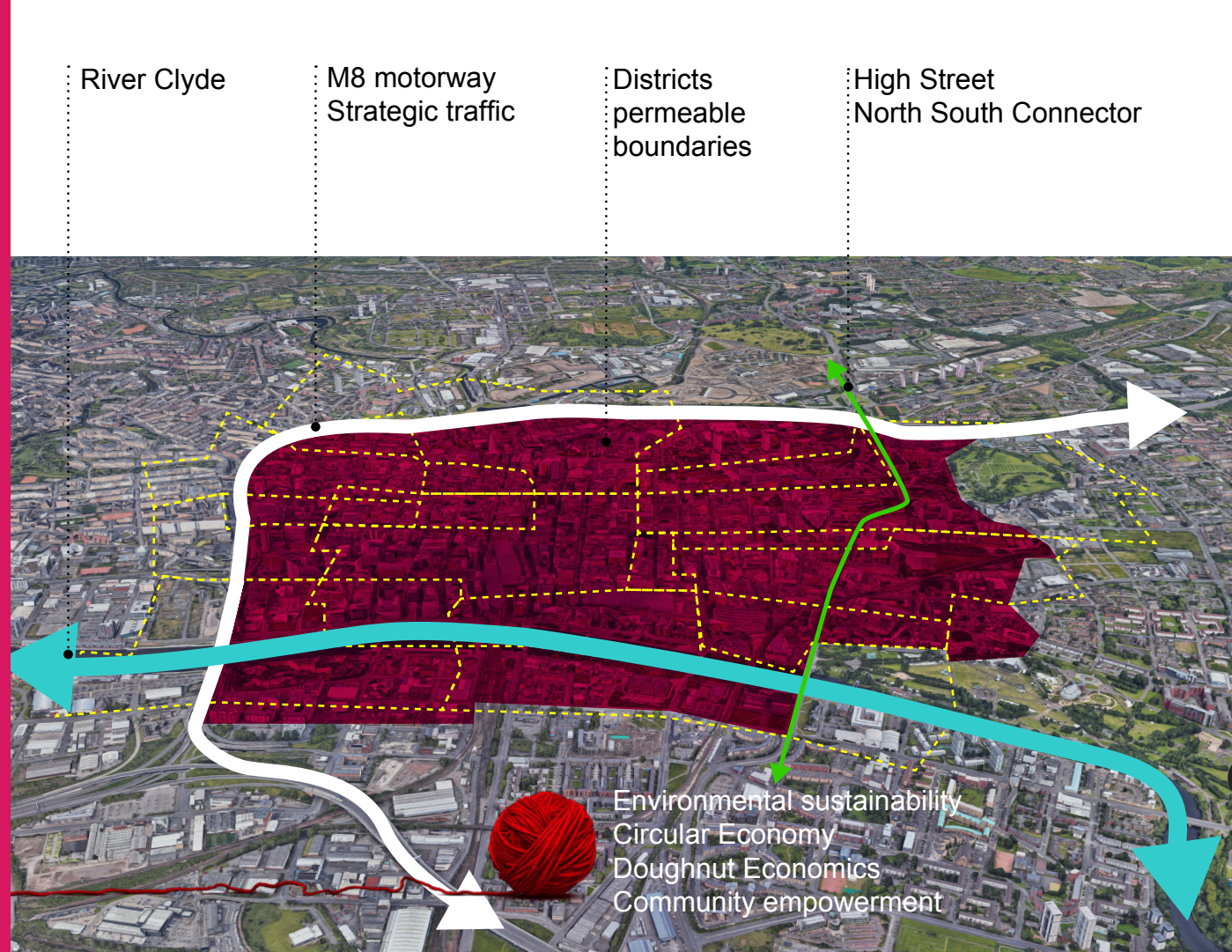
Sighthill - 1000 new homes

D

DISTRICTS

City Centre Strategy

- 9 District regeneration frameworks:
 - Short, medium and long-term actions that will bring economic, environmental and social improvements to each area
 - Created with input from local communities, organisations and a wide range of stakeholders.



River Clyde

M8 motorway
Strategic traffic

Districts
permeable
boundaries

High Street
North South Connector

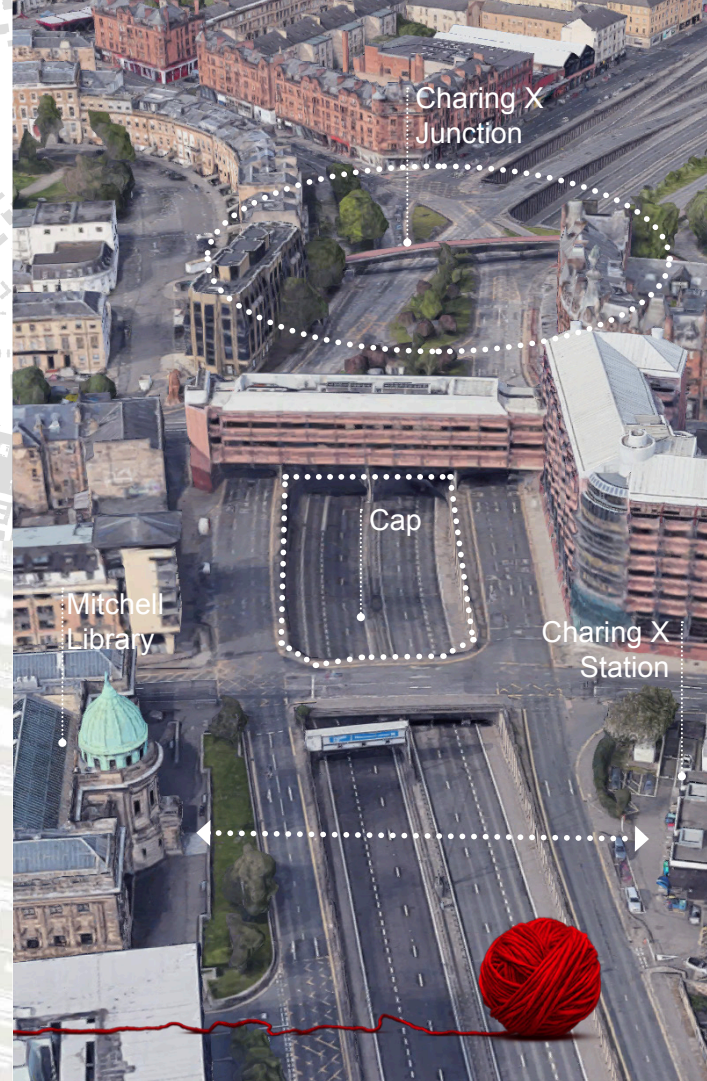
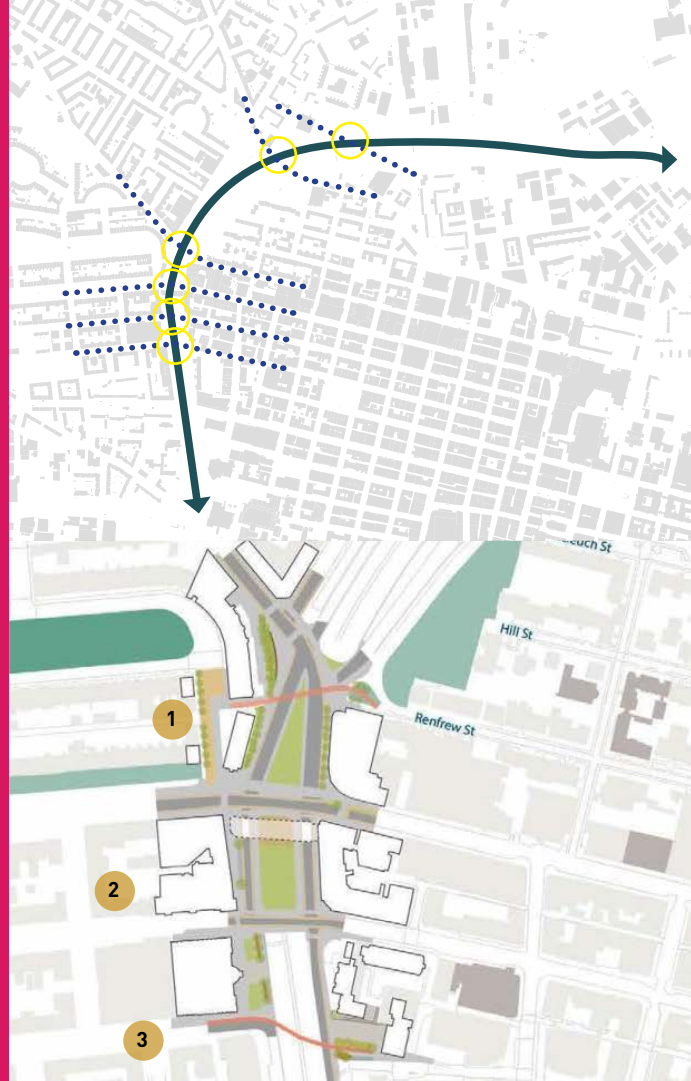
Environmental sustainability
Circular Economy
Doughnut Economics
Community empowerment



CHARING CROSS

Garnethill & Sauchiehall DRF

- Stitching the city together across the M8
- 3 Key projects at Charing X Junction





AVENUES

The Avenues strategy was originally conceived in the CCS as an integrated network of continuous pedestrian and cycle priority routes, with avenues of green infrastructure.

The Avenues will connect key areas and transport nodes within Glasgow city centre, as well as improving connections and interfaces with surrounding neighbourhoods and areas.

This initial Avenues concept was further developed into the **EIIPR programme** :

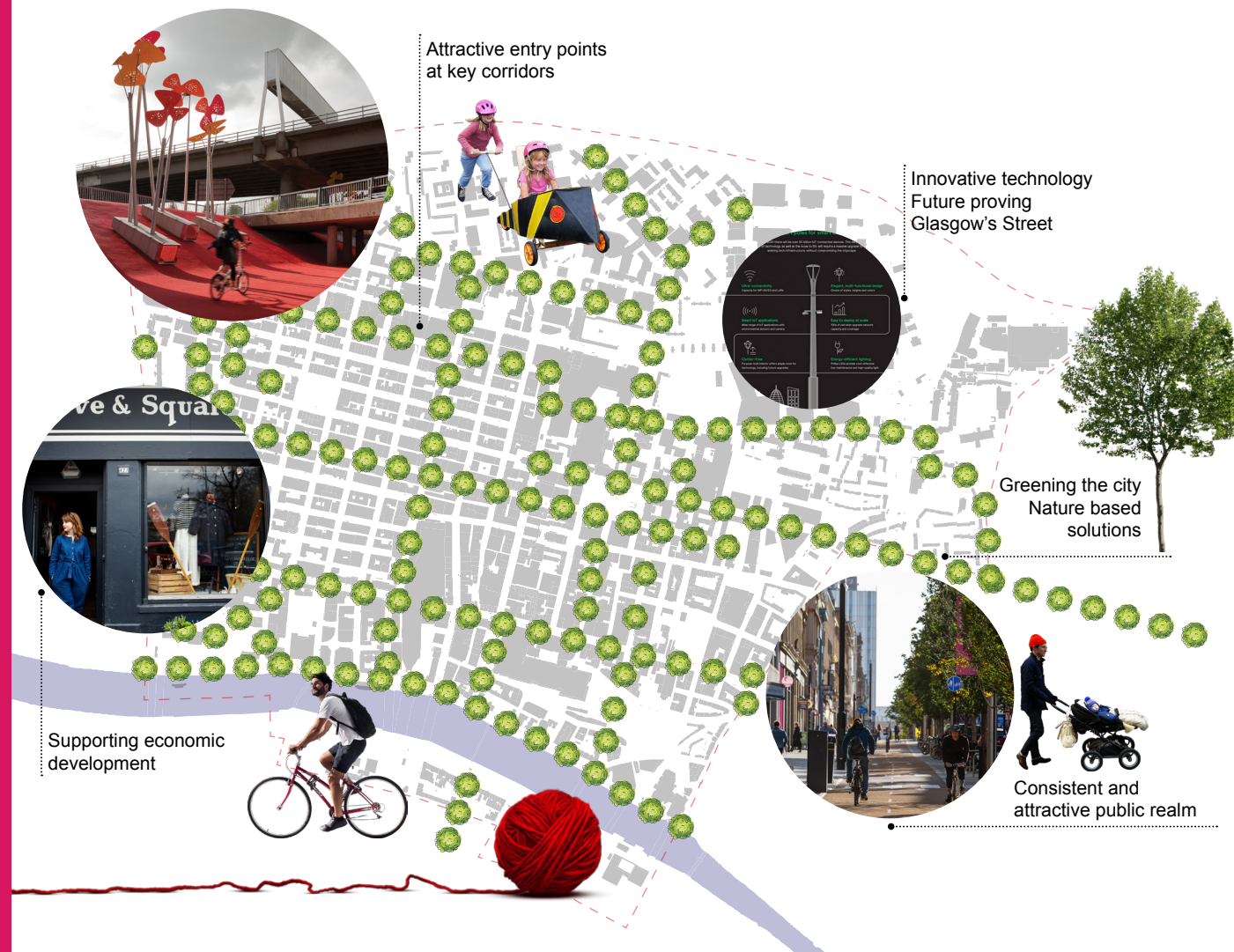
- **21 Avenues** in EIIPR programme
- **5 Blocks** of work
- **Deliver by December 2027**



A

AVENUES

- Creating attractive points of entry at key corridors
- Greening the city through the provision of quality landscape and environments
- Embracing innovative technology and future proofing Glasgow's streets
- Encouraging commercial, retail, leisure and residential property development
- Providing consistent and attractive public realm





SAUCHIEHALL A

People-first solutions

Attractive public realm

Active frontages

Improved lighting features



Integrated green and blue infrastructure, climate mitigation solutions

Improved connectivity / A balanced approach to motorised vehicle, pedestrian and cycle networks



A

SAUCHIEHALL

... the number of people using a bike to travel into the centre of Glasgow has soared by more than 80% over the past two years as efforts continue to drive down car use, according to new figures.

<https://www.heraldscotland.com/news/18898246.cycling-glasgow-city-centre-soars-80/>



“Cycling in
Glasgow city centre
soars by 80%”



GEORGE SQUARE

Circular Economy Route Map For Glasgow 2020 – 2030

The **Circular Economy Route Map** sets out a framework to allow Glasgow to truly embrace a **sustainable economic future**.

It presents a vision for a **circular city** and provides the context in which the local economy is seen as an engine for environmental and **social regeneration**.

It is all in the brief....



Circular
Economy



A place
to sit and
relax



More greening
and
sustainability



Heritage



Quality
in design



Less traffic



Public
involvement
in design



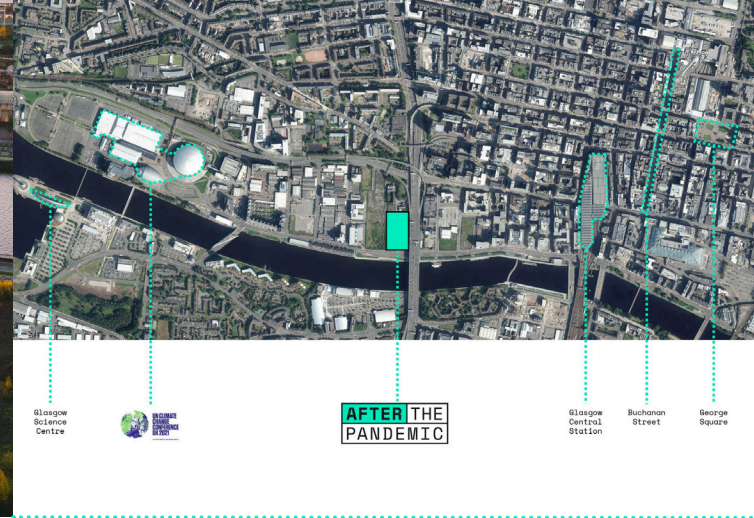
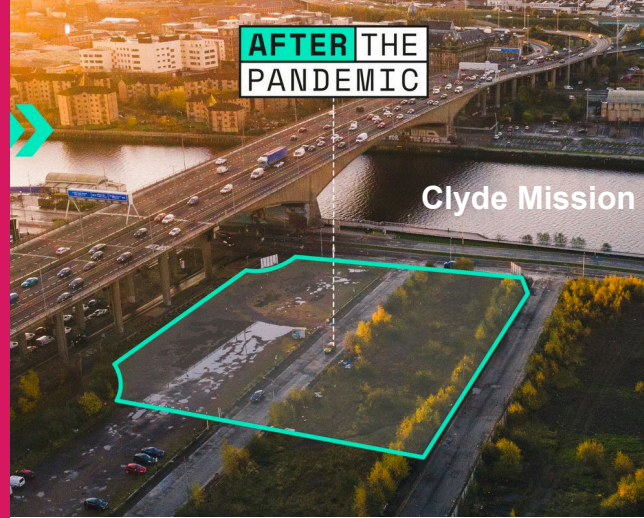
LN

LATERAL

NORTH

@After_Pandemic

A cultural and creative hub for Glaswegians responding to the Pandemic, climate crisis and other converging challenges.



3000sqm of vacant land along the River Clyde to put people and communities at the heart of the **COP26** conversation.

The space will present global challenges at a local level, and engage with international communities from around the world.

Five Years, Five Commitments

Five Years on from the Paris Agreement, After the Pandemic is putting forward, and being guided by, Five Commitments.

These principles will help focus how we develop the initiative going forward as well as be at the heart of what we do along the Clyde River in the run up to, and during COP26.



**Inclusive
communities**



**Dear greenest
place**



**Learn &
grow**



**Local for
global**



**Design
forward**



GLASGOW

Paola Pasino
paola.pasino@glasgow.gov.uk

